



TAKE CONTROL BY PAIRING
**VIVINEX™ GEMETRIC™ &
VIVINEX™ GEMETRIC™ PLUS**



Introducing our trifocal family of IOLs
designed to advance patients' vision

Would it surprise you to learn that people are spending more than 40% of their time on 'near' tasks?¹

To achieve spectacle independence, people need high quality vision from far to very near.

HOW DOES PAIRING WORK?

Vivinex™ Gemetric™> EXCELLENT> VERY GOOD> GOOD

Vivinex™ Gemetric™ Plus> VERY GOOD> GOOD> EXCELLENT

RANGE OF VISION

FAR



INTERMEDIATE



NEAR



Pairing provides a continuous broad range of vision

Binocular Defocus by Study Group²

Vivonex™ Gemetric™
Vivonex™ Gemetric™
[n=36]

Vivonex™ Gemetric™ Plus
Vivonex™ Gemetric™ Plus
[n=52]

Paired Approach
Vivonex™ Gemetric™
Vivonex™ Gemetric™ Plus
[n=36]

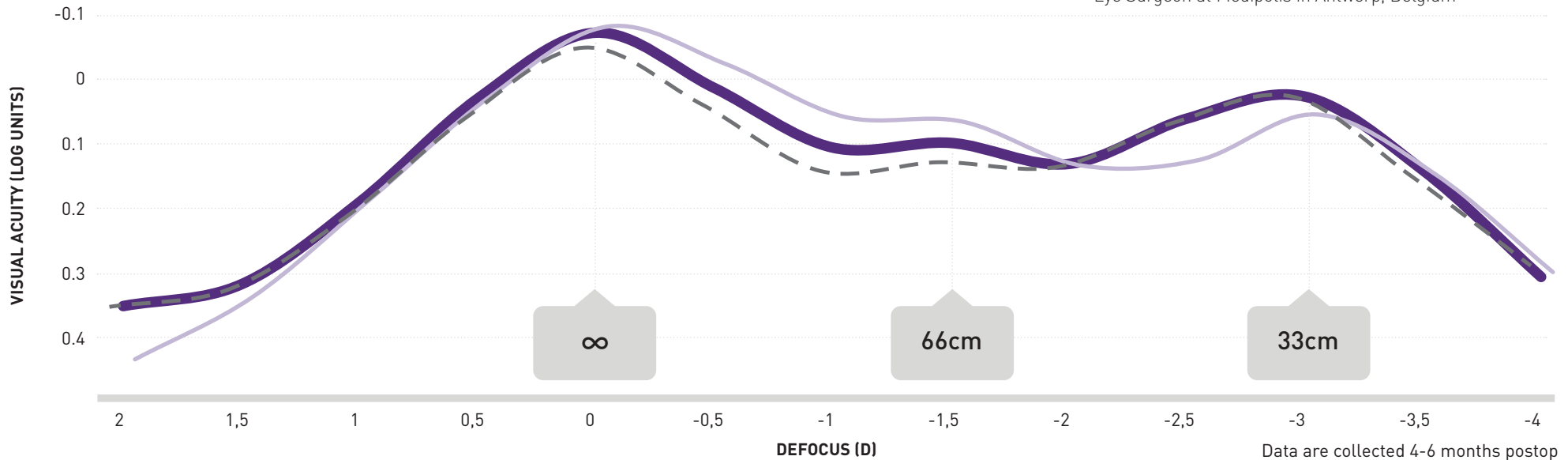
Data includes Toric versions of both products



The balance between the Vivonex™ Gemetric™ and the Vivonex™ Gemetric™ Plus gives a very smooth transition from far to intermediate to near vision.³



Erik L. Mertens, MD, FEBO, FWCRS
Physician CEO, Medical Director and
Eye Surgeon at Medipolis in Antwerp, Belgium



Pairing Vivonex™ Gemetric™
& Vivonex™ Gemetric™ Plus

Pairing light distributions
not add powers for
continuous vision from far
through near

EXCELLENT> VERY GOOD> EXCELLENT>

FAR



INTERMEDIATE

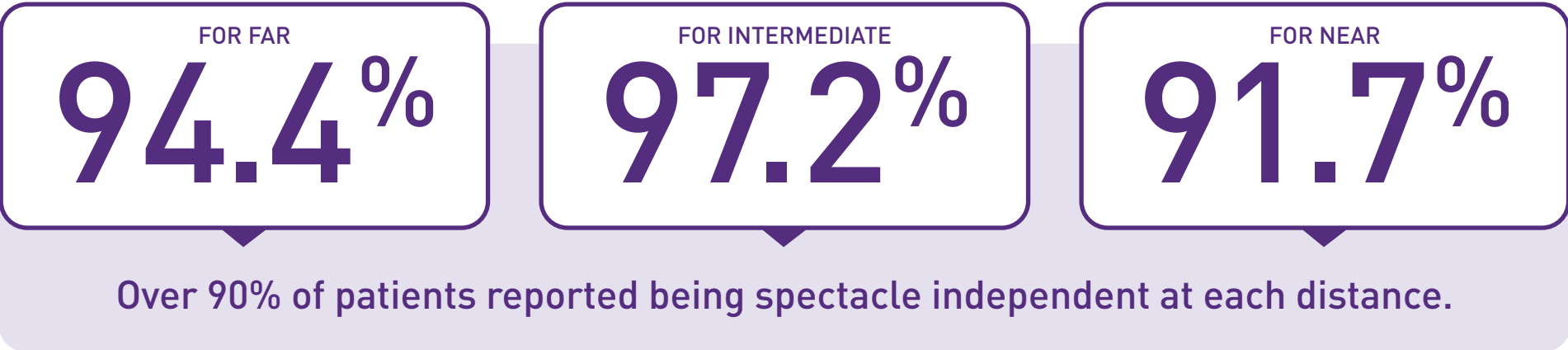


NEAR

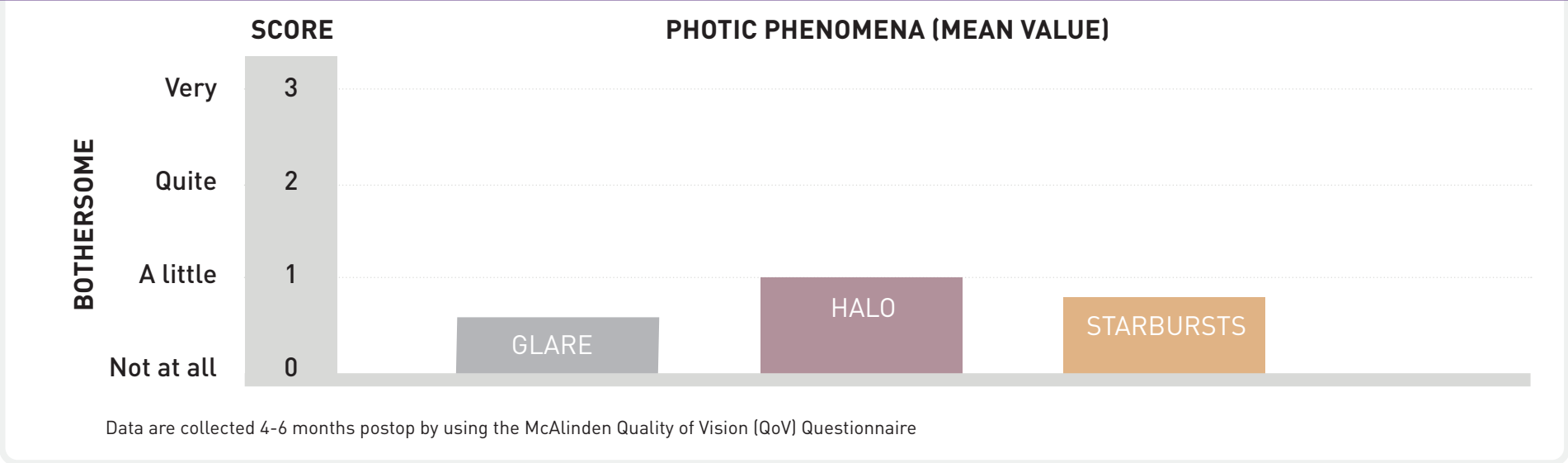


Pairing provides high degrees of spectacle independence

High self-reported spectacle independence and patient satisfaction when pairing Vivinex™ Gemetric™ and Vivinex™ Gemetric™ Plus 6 months after surgery (n=36).²

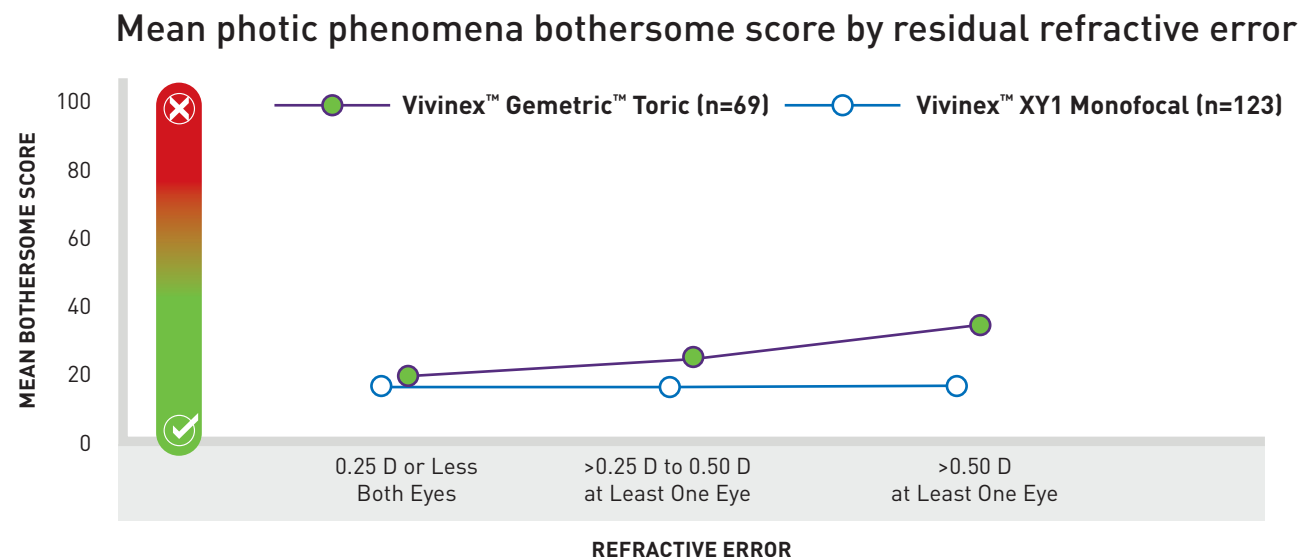


The mean photic phenomena score was between “a little bothersome” and “not at all bothersome” across all Vivinex™ Gemetric™ study groups (n=125).²



Photic phenomena rarely considered bothersome by patients

Photic phenomena bothersome scores are on par with a monofocal IOL in the presence of small refractive errors.⁴



Data are collected minimum 4-months postop by using the McAlinden Quality of Vision (QoV) Questionnaire

Designed to reduce photic phenomena and provide excellent visual outcomes⁴



Patented Gaussian edge smoothing

Intentional edge smoothing of the diffractive elements improves manufacturing accuracy and reduces unwanted light scattering.



8 diffractive rings with low step height

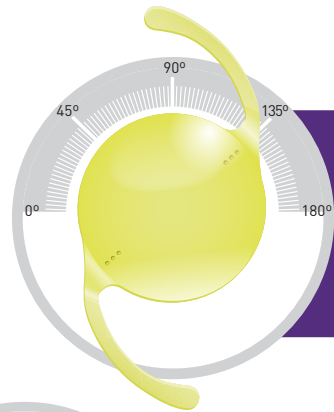
Fewer diffractive steps with low profile may further reduce unwanted light scatter.



Non-apodized 3.2 mm diffractive zone

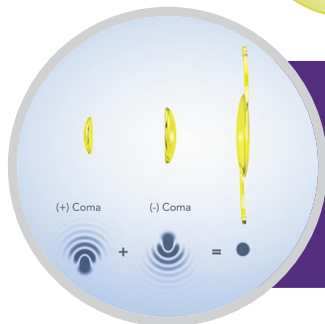
Designed to provide a full range of vision by working in harmony with natural pupil responses to lighting conditions and fixation distances.

Vivinex™ platform delivers clarity of vision



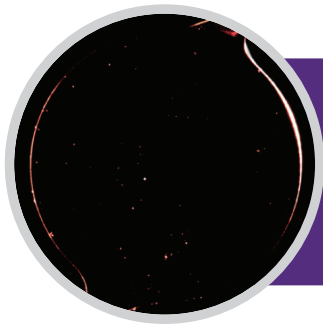
Outstanding rotational stability

Clinically proven rotational stability. More than 96% of implanted lenses rotated $\leq 5^\circ$ including eyes with high axial lengths.^{5,6,7}



Improved image quality

Incorporates the Vivinex™ proprietary aspheric optic design which partially compensates for corneal spherical aberration and is more tolerant to sources of coma than standard aspheric designs.^{8,9,10}

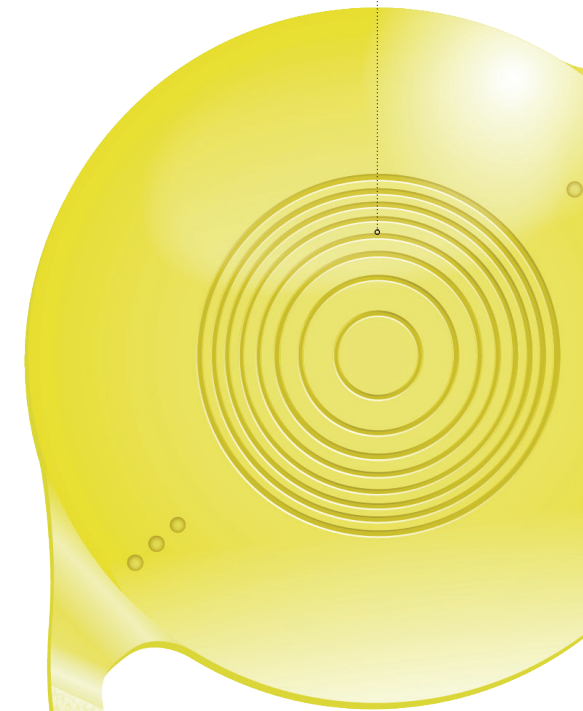


IOL material and design

Glistening-free IOL material^{11,12}, Grade 0 based on Miyata et al.¹³ with 11.6 ± 5.7 MV/mm².

Active oxygen processing treatment, a smooth surface and square optic edge to reduce PCO.^{12,14,15,16,17,18,19,20,21}

Diffractive zone in the central 3.2 mm



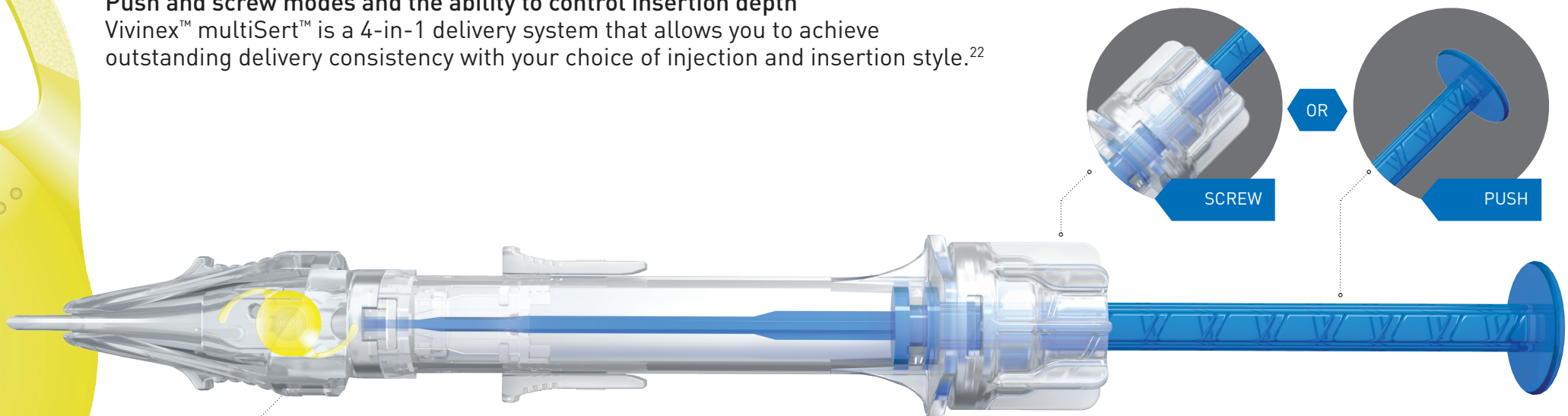
Textured-rough haptic surface designed to reduce potential for adhesion to the optic surface during delivery, and provides better grip inside the capsular bag.



Predictable and consistent delivery with the multiSert™ preloaded injector

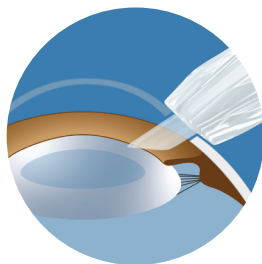
Push and screw modes and the ability to control insertion depth

Vivinex™ multiSert™ is a 4-in-1 delivery system that allows you to achieve outstanding delivery consistency with your choice of injection and insertion style.²²



Delivery into capsular bag
insert shield:
Default position

OR



Delivery through incision wound tunnel
insert shield:
Advanced position



The Vivinex™ Gemetric™ and the multiSert™ injector are a perfect combination. The product combines an excellent optic with an excellent material and an excellent IOL delivery device.²³

Ramin Khoramnia, Chairman Department of Ophthalmology,
University Clinic Carl Gustav Carus at the TU Dresden, Germany



Specifications

For the toric cylinder calculation please visit www.HOYAtoric.com

	Vivonex™ Gemetric™	Vivonex™ Gemetric™ Toric		Vivonex™ Gemetric™ Plus	Vivonex™ Gemetric™ Plus Toric	Model XY1-GT, XY1-GPT	Cylinder power at IOL plane	Cylinder power at corneal plane ²⁵
	Designed to provide excellent distance vision and well balanced intermediate and near vision ²⁴			Designed to provide excellent near vision and well balanced distance and intermediate vision ²⁴				
Model name	XY1-G	XY1-GT	Model name	XY1-GP	XY1-GPT	T2	1.00 D	0.69 D
IOL power (Spherical equivalent)	+10.00 D to +30.00 D in increments of 0.50 D		IOL power (Spherical equivalent)	+10.00 D to +30.00 D in increments of 0.50 D		T3	1.50 D	1.04 D
Cylinder power at IOL plane		1.00 D 1.50 D to 3.75 D in 0.75 D increments	Cylinder power at IOL plane		1.00 D 1.50 D to 3.75 D in 0.75 D increments	T4	2.25 D	1.56 D
Add power at IOL plane	Intermediate: +1.75 D Near: +3.50 D		Add power at IOL plane	Intermediate: +1.75 D Near: +3.50 D		T5	3.00 D	2.08 D
Nominal A-constant*	119.0		Nominal A-constant*	119.0		T6	3.75 D	2.60 D
Injector	multiSert™ preloaded		Injector	multiSert™ preloaded				
Front injector tip outer diameter	1.70 mm		Front injector tip outer diameter	1.70 mm				
Recommended incision size	2.20 mm		Recommended incision size	2.20 mm				



SCAN HERE TO VIEW
PRODUCT INFORMATION

Delivered by the **multiSert™** preloaded injector



CE 0123 2025-08-12_HSOE_XY1-G_XY1-GP_XY1-GT_XY1-GPT_BR_EN

References: 1. Ribeiro et al. (2023): Analysis of Daily Visual Habits in a Presbyopic Population. J Ophthalmol. 2023 Apr 8;2023:6440954. 2. Kaymak, H. et al. (2024): Customizing clinical outcomes with implantation of two diffractive trifocal IOLs of identical design but differing light distributions to the far, intermediate and near foci. In: Clinical Ophthalmology 2024;18 1009–1022. 3. HOYA (2022): Vivonex Gemetric Testimonial Video E. Mertens, Video on file, 2022_05_31_05_HSOE_XY1-G_XY1-GP_XY1-GT_XY1-GPT_VD_EN_EMertens. 4. Manuscript submitted for publication in September 2025. 5. Schartmueller, D. et al. (2019): True rotational stability of a single-piece hydrophobic intraocular lens. In: The British journal of ophthalmology 103 (2), p. 186–190. 6. Brar et al. (2024): Clinical outcomes and rotational stability following implantation of a monofocal toric IOL with textured haptics in normal versus high axial lengths. In: Journal of Cataract & Refractive Surgery, 50(7);p 718-723, July 2024. 7. Hoffmann, P. et al. (2025): Comparing Rotational Stability Over Time Between Four Monofocal Toric Intraocular Lenses. In: Clinical Ophthalmology 2025;19 1345–1355. 8. Pérez-Merino, P.; Marcos, S. (2018): Effect of intraocular lens decentration on image quality tested in a custom model eye. In: Journal of cataract and refractive surgery 44 (7), p. 889–896. 9. Chandra et al. (2022): Effect of decentration on the quality of vision: comparison between aspheric balance curve design and posterior aspheric design intraocular lenses. J Cataract Refract Surg. 2022 May 1;48(5):576–583. 10. Thakur et al. (2024) Effect of decentration on the quality of vision in two aspheric posterior chamber intraocular lenses: A contralateral eye study. In: Indian J Ophthalmol. 2024 Jan 8. 11. Tandogan, T. et al. (2021): In-vitro glistening formation in six different foldable hydrophobic intraocular lenses. In BMC Ophthalmol 21, 126. 12. Auffarth et al. (2023) Randomized multicenter trial to assess posterior capsule opacification and glistenings in two hydrophobic acrylic intraocular lenses. Sci Rep 13, 2822. 13. Miyata, A. et al. (2001): Clinical and experimental observation of glistening in acrylic intraocular lenses. In: Japanese journal of ophthalmology 45 (6), p. 564–569. 14. Leydolt, C. et al. (2020): Posterior capsule opacification with two hydrophobic acrylic intraocular lenses: 3-year results of a randomized trial. In: American journal of ophthalmology 217 (9), p. 224–231. 15. Giacinto, C. et al. (2019): Surface properties of commercially available hydrophobic acrylic intraocular lenses: Comparative study. In: Journal of cataract and refractive surgery 45 (9), p. 1330–1334. 16. Werner, L. et al. (2019): Evaluation of clarity characteristics in a new hydrophobic acrylic IOL in comparison to commercially available IOLs. In: Journal of cataract and refractive surgery 45 (10), p. 1490–1497. 17. Matsushima, H. et al. (2006): Active oxygen processing for acrylic intraocular lenses to prevent posterior capsule opacification. In: Journal of cataract and refractive surgery 32 (6), p. 1035–1040. 18. Farukhi, A. et al. (2015): Evaluation of uveal and capsule biocompatibility of a single-piece hydrophobic acrylic intraocular lens with ultraviolet-ozone treatment on the posterior surface. In: Journal of cataract and refractive surgery 41 (5), p. 1081–1087. 19. Eldred, J. et al. (2019): An In Vitro Human Lens Capsular Bag Model Adopting a Graded Culture Regime to Assess Putative Impact of IOLs on PCO Formation. In: Investigative ophthalmology & visual science 60 (1), p. 113–122. 20. Nanavaty, M. et al. (2019): Edge profile of commercially available square-edged intraocular lenses: Part 2. In: Journal of cataract and refractive surgery 45 (6), p. 847–853. 21. Leydolt, C. et al. (2024): Posterior capsule opacification with two similar-design hydrophobic acrylic intraocular lenses: 3-year results of a randomized controlled trial. In: Journal of cataract and refractive surgery 50, p. 1242–1246. 22. HOYA data on file. DoF-SERT-102-MULT-03052018, HOYA Medical Singapore Pte. Ltd, 2018. 23. HOYA (2022): Vivonex Gemetric Testimonial Video R. Khoramnia, Video on file, 2022_05_31_05_HSOE_XY1-G_XY1-GP_XY1-GT_XY1-GPT_VD_EN_RKhoramnia. 24. HOYA data on file. HOYA Medical Singapore, 2020. 25. Based on an average pseudophakic human eye. *The A-constant is presented as a starting point for the lens power calculation. When calculating the exact lens power, it is recommended that calculations be performed individually, based on the equipment used and operating surgeon's own experience. Information contained is intended for health care professionals. For the intended purpose and a full list of indications and contraindications please refer to the Instructions For Use. Some of the products and/or specific features as well as the procedures featured in this document may not be approved in your country and thus may not be available there. Design and specifications are subject to change without prior notice as a result of ongoing technical development. Please contact our regional representative regarding individual availability in your country. HOYA, Vivonex, Gemetric and multiSert are trademarks of the HOYA Corporation or its affiliates. ©2025 HOYA Medical Singapore Pte. Ltd. All rights reserved. HOYA Medical Singapore Pte. Ltd., 10 Biopolis Road #04-01/06, Chromos, Singapore 138670, SINGAPORE