

OPTOMED

Quick Menu Of Optomed Aurora

Training Presentation

(R2.0)

Entering quick menu

Enter quick menu by pressing Optoroller



Focus

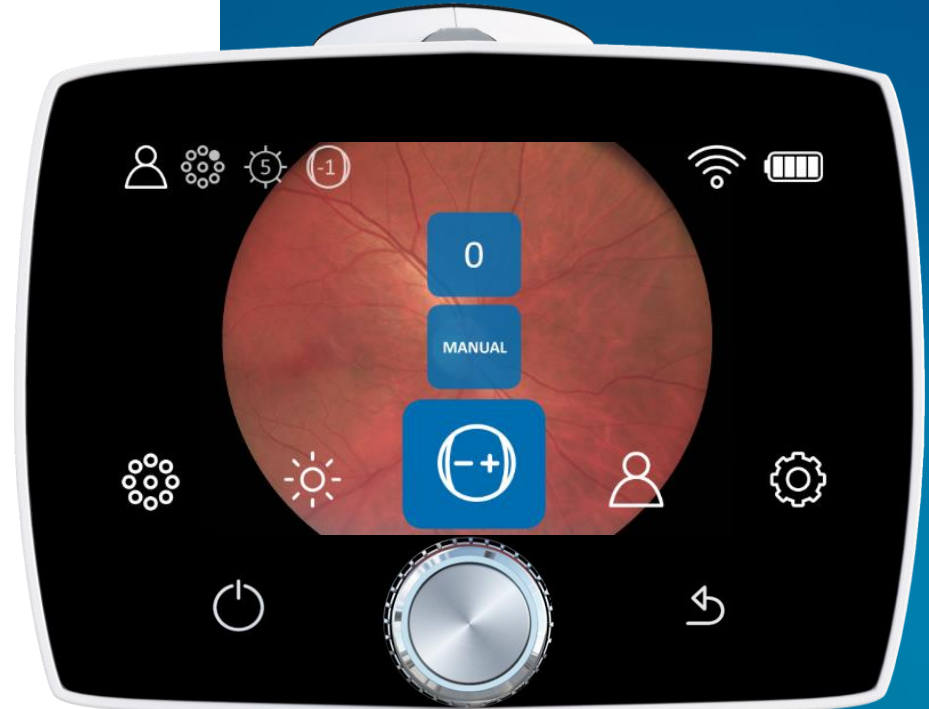
Select focusing mode

Manual

- Diopter adjusted according to refractive error manually with Optoroller.
- Diopter scale is shown on the screen
- Best choice if refraction of patient is known.

Automatic

- Correct focus found automatically by pressing shutter button to first position.
- Autofocus range from -15 to +10
- If patients refraction is unknown OR
- patient actively focuses to different distances.



Brightness level

Adjust brightness

Retinal module

- Brightness scale from **0** to **10** (default 5).
- Possible to reduce the brightness setting below 1, to 0.8, 0.6, 0.4 and 0.2, if needed.
- Suitable illumination level for
 - Small babies 1 – 2
 - For premature babies even less than 1, for example 0.6
 - blue and green eyes typically 3-5
 - brown eyes typically 6-8
 - very dark eyes 9-10

Anterior module

- Select between white or blue LEDs
- Brightness adjusted between 0 and 10



Target LEDs

Optomed Aurora Retinal Module has 9 internal fixation targets for the patient to fixate during imaging.

Macula centered image



Papilla centered image



Patient editor



Four image sequence

By selecting 'Four image sequence' a new patient study is created and the camera will guide to take both macula and disc centered images from patient's right and left eyes.



New patient study

New patient folder is recommended to create for each patient. If worklist is imported to camera user can select patient from the list or create study without patient details.



Image preview

Select 'Preview images' setting by pressing Optoroller to preview captured images. The latest image will be shown. To change image, first choose the patient from the folder list and then the captured image from the study list. When captured image is shown, image can be zoomed by pressing Optoroller.



Focus window

Optomed Aurora Anterior Module has 4 focus windows for the user to focus image on different areas during imaging.



Advanced menu

To change Camera or Optics specific settings select settings option by pressing Optoroller



OPTOMED

Optomed Oy

Yrttpellontie 1,
90230 Oulu, Finland
Tel: +358 20 741 3380
info@optomed.com

www.optomed.com

Designed in Finland