



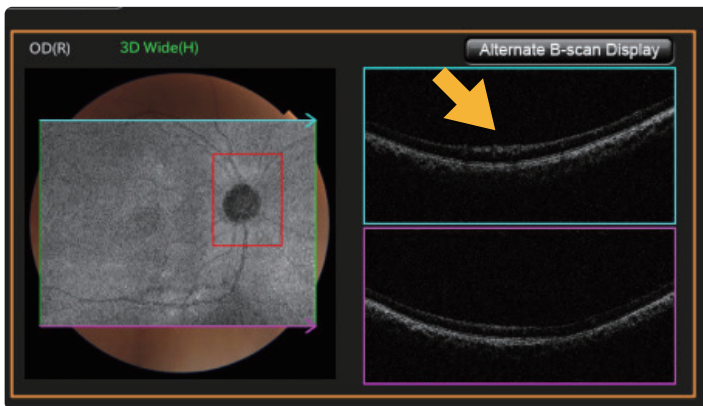
# TIPS FOR OBTAINING HIGH QUALITY OCT SCANS

MAESTRO2



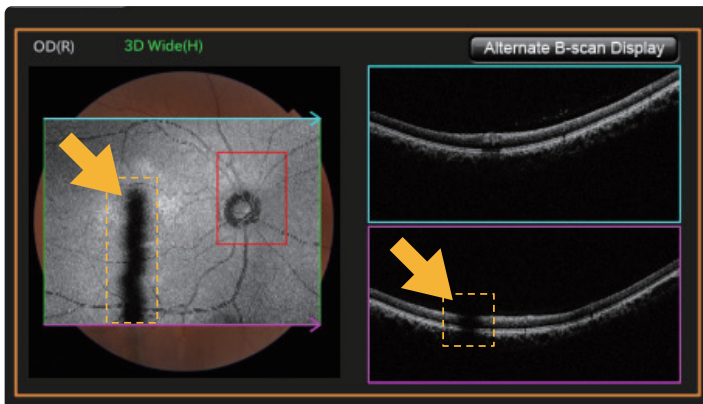
## HIGH QUALITY OCT SCAN (EXAMPLE)

A good OCT scan is one that is free from a global/local weak signal, clipping, eye movement, blinking and poor fixation.



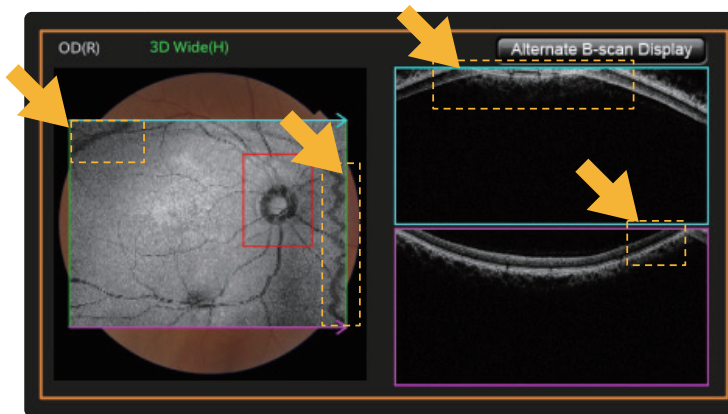
## GLOBAL WEAK SIGNAL

Contrast is low and the Image Quality Value (IQV) score is less than the cutoff. This can occur if the patient has media opacities or poor tear film.



## LOCAL WEAK SIGNAL

Observed in Live Fundus View (LFV) or Projection. Ask patient to look up and down, then rescan.



## CLIPPING

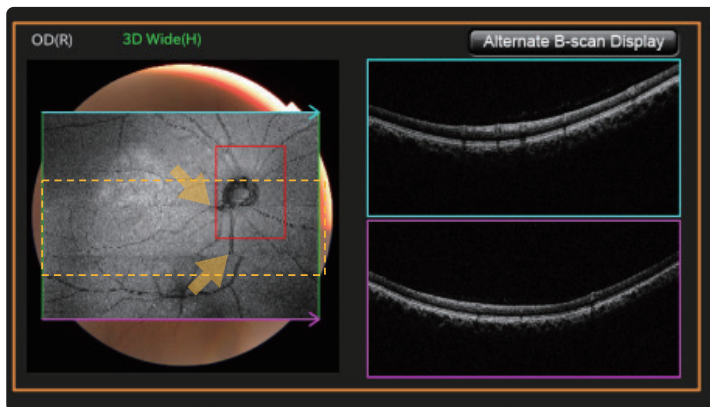
Clipping can be observed in the top and bottom scans (as a mirror-effect) and in the LFV or Projection images. If this occurs, adjust scan height down using the Z-lock slider, then rescan.

**Note:** The scan is acceptable if the clipping is limited to the edges, not affecting the center of the scan.



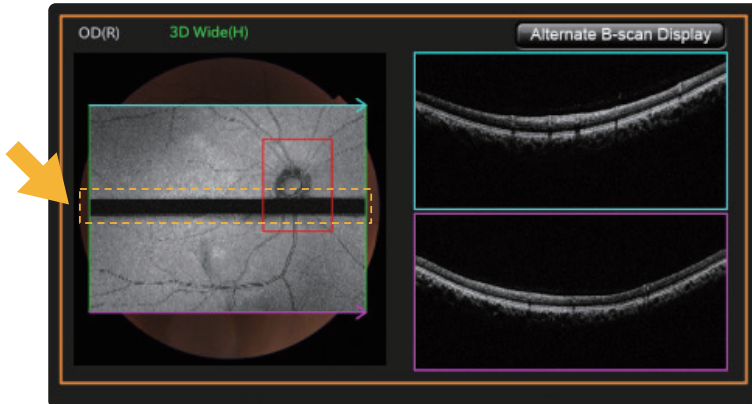
## EYE MOVEMENT

Observed as discontinuity in blood vessels or as a light band across projection image.



## BLINKING

Dark band seen in LFV or projection.



## POOR FIXATION

The optic disk should be within the red box for 3D Wide Scans and 3D Disk Scans.

