

Optomed VET Segment Introduction

OPTOMED

R2.0 DOC70002899



OPTOMED

Enabling Screening for All



Optomed is a market leader in cutting-edge handheld retinal imaging technology, improving accessibility of eye screenings.



Our **AI-powered screening solutions** aim to

- **transform diagnostic processes** of various diseases
- **empower early detection** and
- **improve health** through innovations

that are trusted by healthcare professionals worldwide.



A veterinarian is performing an eye examination on a dog. The veterinarian is using a retinoscope, a device used to examine the internal structures of the eye. The dog is looking towards the camera. The background is a solid blue color.

Veterinary Eye Examinations

Regular eye examinations help detect and treat eye diseases early, preserve vision and improve overall health

OPT[©]MED

Retinal Examination for Early Detection and Treatment

For making informed decisions on breeding

- Eye check-ups for hereditary diseases

Optic nerve examination

- To detect optic nerve coloboma and hypoplasia, and for assessing neurological health i.e. brain issues

Detecting systemic diseases and monitoring age-related changes

- Diabetes, hypertension and infectious diseases, like toxoplasmosis in cats



HEREDITARY EYE DISEASES AFFECTING DOGS

Detectable from retinal images

Based on British Veterinary Association and Kennel Club Eye Scheme Schedule A*

- **Progressive Retinal Athrophy** (19 breeds)
- **Retinal Pigment Epithelial Dystrophy** (9 breeds)
- **Multifocal Retinal Dysplasia** (7 breeds)
- **Collie Eye Anomaly** (3 breeds)
- **Total Retinal Dysplasia** (3 breeds)

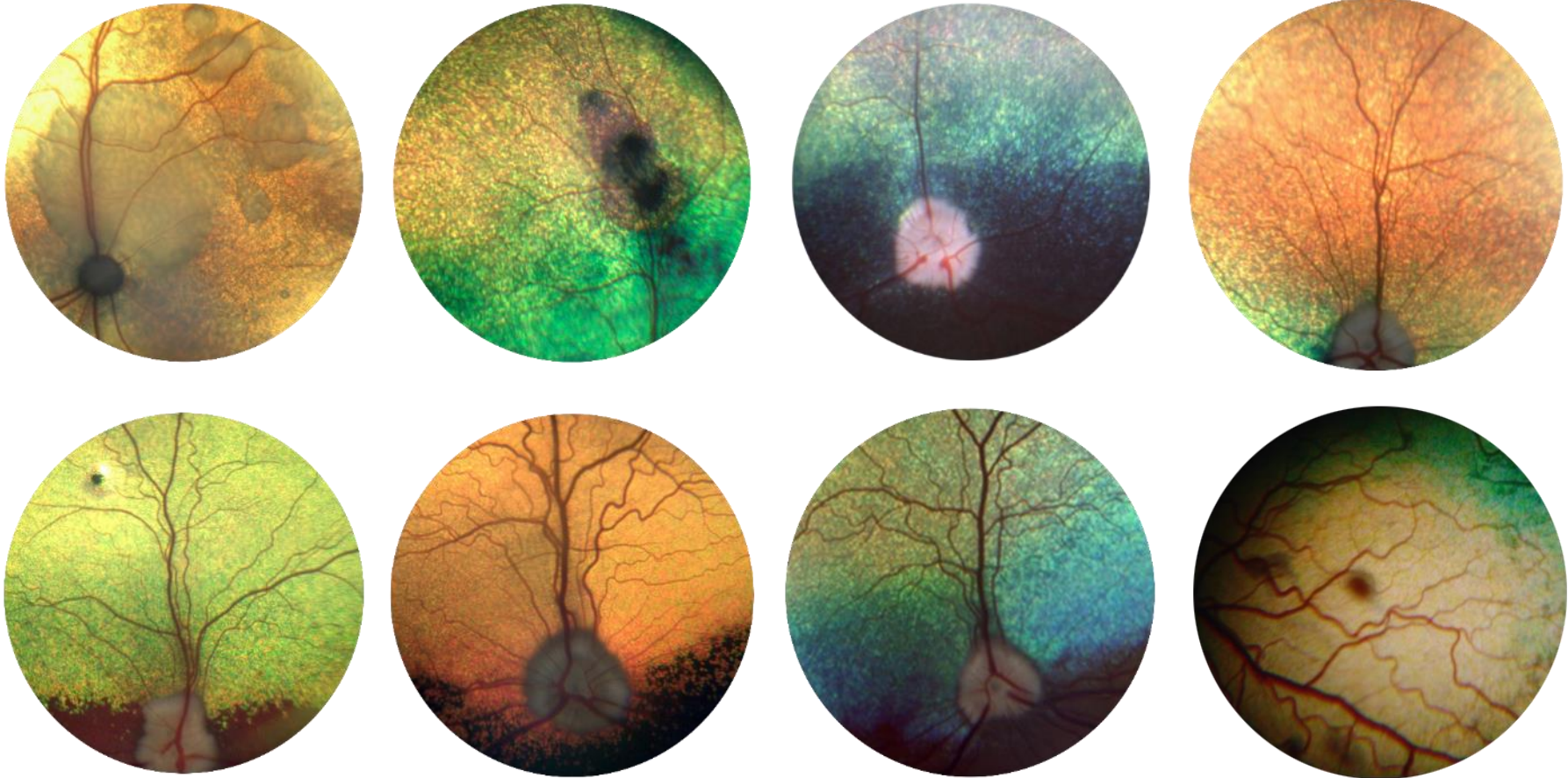
Common Breeds at Risk of Eye Disease

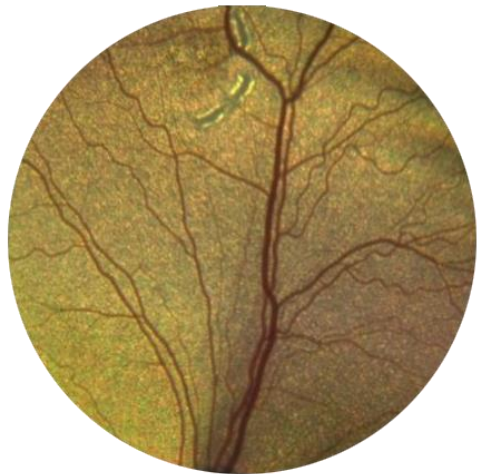
Border Collie
Cocker Spaniel
English Springer Spaniel
French Bulldog
Golden Retriever
Labradoodle
Labrador Retriever
Miniature Schnauzer
Pug
Lapponian Herder



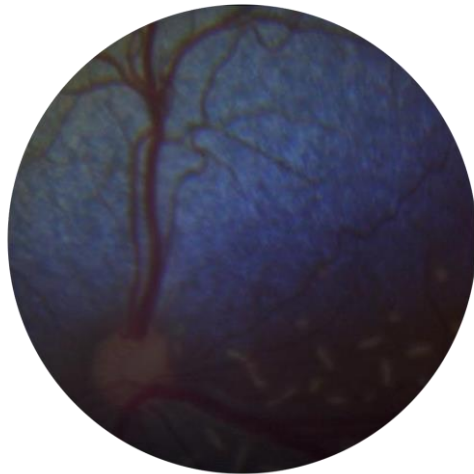
*Source: <https://www.bva.co.uk/media/2811/20190710-chs-eye-disease-guide-0719-v1-web.pdf>

Retinal Images Taken with the Optomed Camera

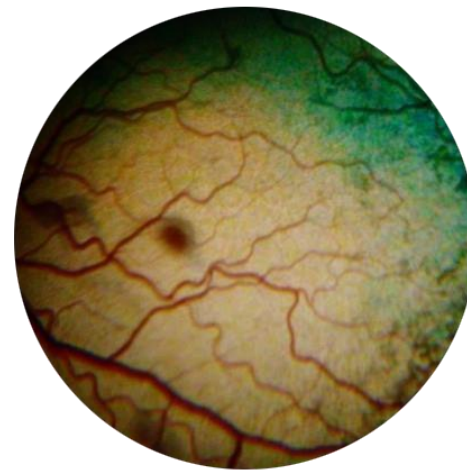




Focal retinal dysplasia – Golden Retriever



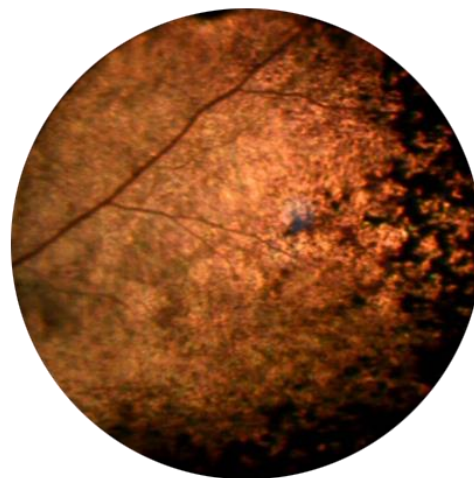
Retinal folds - Border Collie Puppy



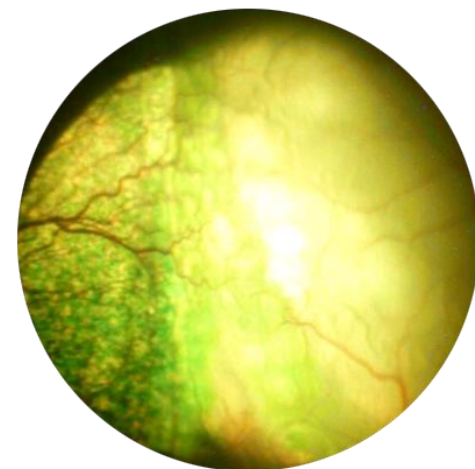
Canine multifocal retinopathy - Lapponian Herder



Multifocal retinal dysplasia



Early progressive retinal atrophy



Retinal detachment

A hand is shown holding a handheld camera, with a dog's head visible in the background. The entire image is overlaid with a dark blue tint.

Testimonials from Optomed Handheld Camera Users

OPTOMED



A More Detailed View of Findings

“I use the Optomed Aurora IQ camera for the documentation and follow-up of retinal findings. A retinal image allows a more detailed view of findings for a later review than a written description. The camera has also been used in imaging retinal conditions suspected to be genetic.

Infrared aiming light of the camera eases the imaging a lot. It is possible to capture high quality images even though the pupil is not dilated.”

Dr. Kaisa Wickström,
Licentiate of Veterinary Medicine, Cert. ECVO Panelist
Veterinary Clinic Kamu
Finland

OPTOMED



Suitable for Eye Certification Examinations

“I use it during official eye screening examinations and for patients with eye problems to show the owner what a fundus look like. Often it is more clear for an owner to see the picture instead of descriptions like retinal vessels, tapetum, optic disc. In some cases, we can also show the abnormalities, like retinal dysplasia, chorioretinitis, hemorrhage.

Suitability for follow-up and remote consultation purposes is good if we store the picture in the medical records of the patient. “

Dr. Gerlinde Janssens,
Veterinarian, Cert. Vet. Ophthalmology
Veterinary Practice Kleidal
Belgium

OPT  **MED**

Excellent Quality Images with Optomed Aurora



Dr. Ellison Bentley
*University of Wisconsin-
Madison, USA*

“The Optomed Aurora has been a great tool for us to use in a wide variety of species, and students love being able to see lesions.”



Dr. Carrie Breaux
*Mountain West Veterinary
Ophthalmology, USA*

“The Aurora fundus camera is easy to use in veterinary ophthalmology and provides excellent quality images.”





OPTOMED AURORA[®] IQ

**Improving Veterinary Eye
Imaging and Documentation**

**PATENTED
TECHNOLOGY**



Easy-to-use technology

- Non-mydriatic operation
- Quick imaging with autofocus
- Real-time visibility to the retina
- Quiet operation



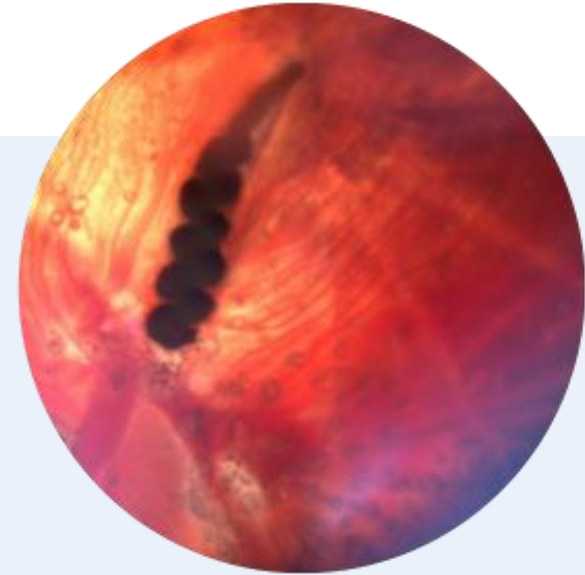
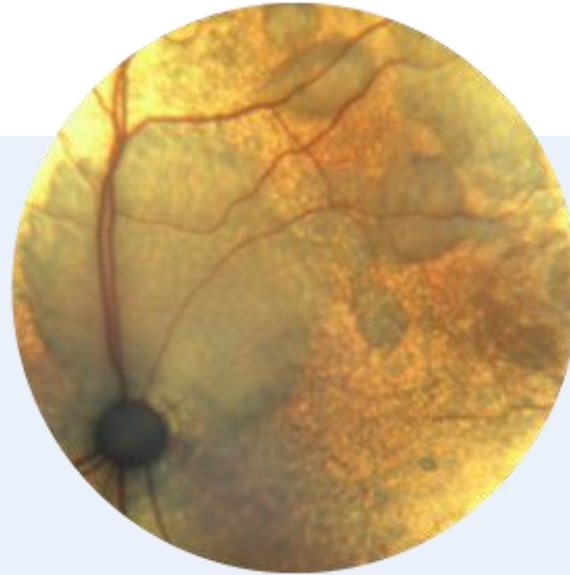
Large screen for viewing the results instantly



Follow-up and consultation on the PC

OPTOMED

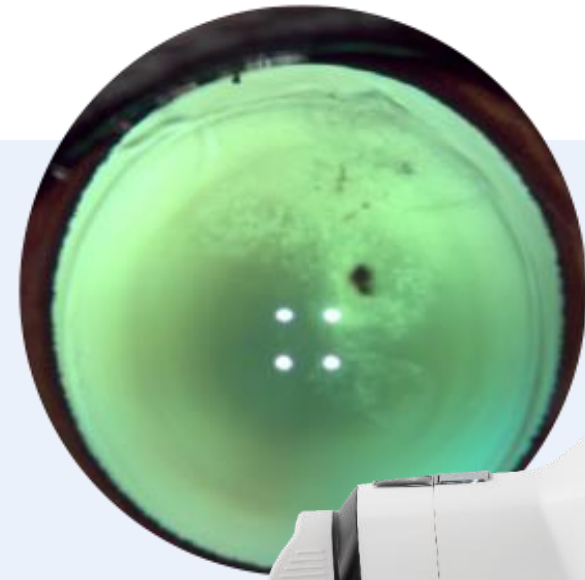
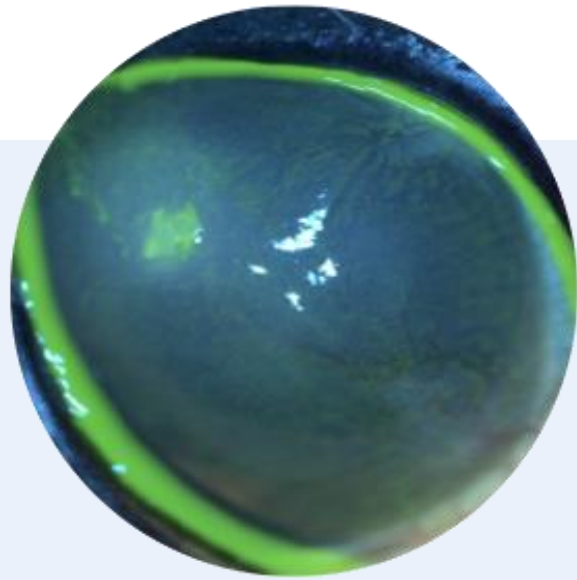
High quality retinal imaging



- Detailed examination with 50° FOV
- Clear images with High-contrast optical design
- Wide brightness setting range for eyes of varying reflectance and pigmentation

OPT  **MED**

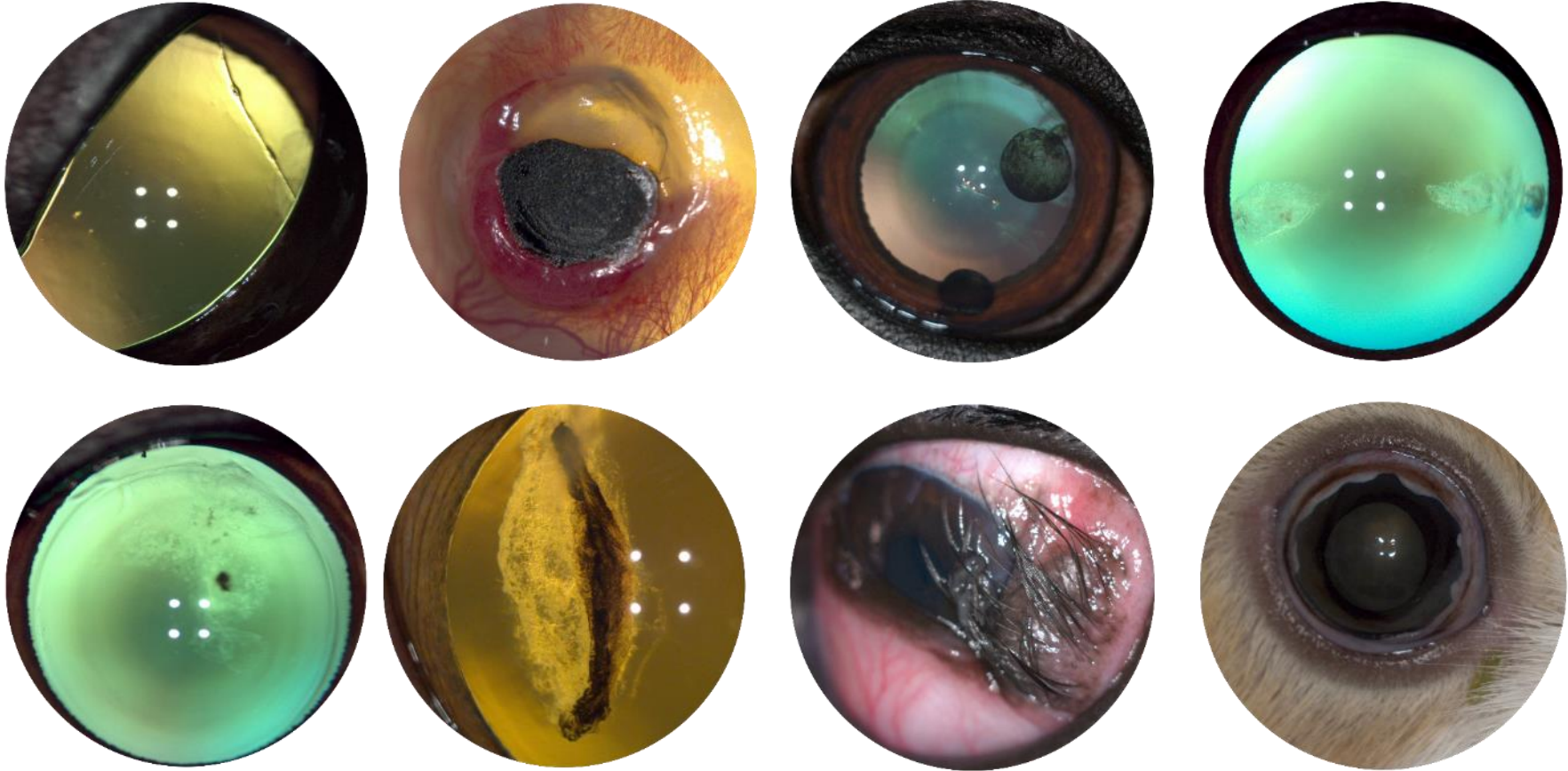
Eye Surface Imaging



- Adjustable illumination levels
- Color imaging and cobalt blue for fluorescein imaging

OPT  **MED**

Eye Surface Images Taken with the Optomed Camera



Optomed is a Valued
Supplier on the IAPB
Standard List



OPTOMED

CORPORATION

Optomed Plc. Yrttpellontie 1, 90230 Oulu, Finland
info@optomed.com • www.optomed.com



BVA/KC/ISDS Eye Scheme Schedule A 2018 (UK)

Alphabetical list of breeds and eye conditions for certification under the Inherited Eye Disease Status section of the Certificate of Examination (ie those specified in Schedule A of the current Procedure Notes and for which "Clinically Unaffected" or "Clinically Affected" boxes should be ticked):

- Alaskan Malamute – HC
- Australian Cattle Dog – PRA
- Australian Shepherd – HC
- Basset Hound – G, POAG
- Bedlington Terrier – TRD
- Belgian Shepherd Dog (all varieties) – HC
- Bichon Frise – HC
- Border Collie – CEA, RPED, PLL
- Boston Terrier – HC (two forms)
- Briard – RPED
- Bull Terrier (Miniature) – PLL
- Cavalier King Charles Spaniel – MRD, HC
- Collie (Rough) – CEA, PRA, RPED
- Collie (Smooth) – CEA, RPED
- Dachshund (Miniature Long-Haired) – PRA
- Dandie Dinmont Terrier – G
- Dobermann – PHPV
- Finnish Lapphund – PRA
- Fox Terrier (Smooth) – PLL
- Fox Terrier (Wire) – PLL
- German Shepherd Dog – HC
- Giant Schnauzer – HC
- Glen of Imaal Terrier – PRA
- Gordon Setter – PRA
- Hungarian Puli – MRD
- Irish Red and White Setter – HC
- Irish Setter – PRA
- Leonberger – G, HC
- Lhasa Apso – PRA
- Miniature Schnauzer – CHC, PRA, HC
- Norwegian Buhund – HC
- Norwegian Elkhound – PRA
- Old English Sheepdog – HC
- Parson Russell Terrier – PLL
- Petit Basset Griffon Vendéen – POAG
- Poodle (Miniature) – PRA
- Poodle (Standard) – HC
- Poodle (Toy) – PRA
- Retriever (Chesapeake Bay) – PRA, HC
- Retriever (Flat Coated) – G
- Retriever (Golden) – MRD, PRA, RPED, HC
- Retriever (Labrador) – MRD, TRD, PRA, RPED, HC
- Retriever (Nova Scotia Duck Tolling) – PRA
- Rottweiler – MRD
- Sealyham Terrier – TRD, PLL
- Shar Pei – POAG
- Shetland Sheepdog – CEA, RPED
- Siberian Husky – G, HC
- Spaniel (American Cocker) – MRD, G, PRA, HC,
- Spaniel (Cocker) – G, PRA, RPED
- Spaniel (English Springer) – MRD, G, PRA, RPED,
- Spaniel (Welsh Springer) – G, HC
- Spanish water Dog – G
- Staffordshire Bull Terrier – PHPV, HC

Inherited eye disease status (NB: For a number of breeds a DNA test is available for certain eye conditions – please refer to current list)

CEA	=	Collie Eye Anomaly
CHC	=	Congenital Hereditary Cataract
G	=	Goniodysgenesis/Primary Glaucoma
HC	=	Hereditary Cataract
MRD	=	Multifocal Retinal Dysplasia
PLL	=	Primary Lens Luxation
PHPV	=	Persistent Hyperplastic Primary Vitreous
POAG	=	Primary Open Angle Glaucoma
PRA	=	Progressive Retinal Atrophy
RPED	=	Retinal Pigment Epithelial Dystrophy (formerly Central Progressive Retinal Atrophy = CPRA)
TRD	=	Total Retinal Dysplasia

